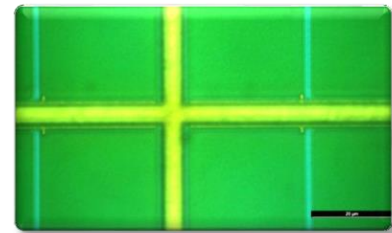
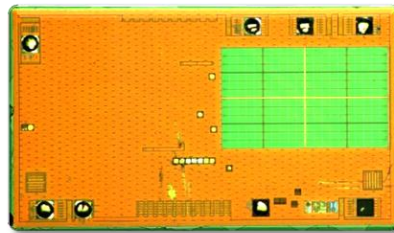
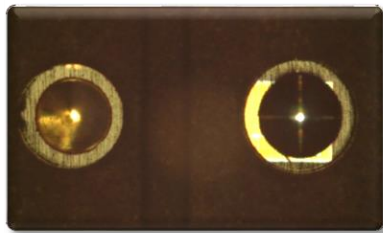


EM30713

I²C Interface 3-in-1 Combo Ambient Light and Proximity Sensor



Product Analysis Report

This report is protected by copyright and may not be by way of trade or otherwise, be copied, reproduced, re-sold, lent, hired out in any form without express written permission from Shanghai Industrial μ Technology Research Institute (Hereinafter referred to as SITRI). SITRI always endeavors to provide accurate and reliable information to its customers. However, it is not possible to guarantee absolute accuracy of all information contained herein and SITRI can assume no liability for inadvertent errors in this report.

This report was prepared for our Clients' private study, analysis or research and for no other purpose. The information contained in this report may describe technical innovations, which are the subject of patents held by third parties. The disclosure by SITRI of any such information is in no form whatsoever an inducement to infringe any patent. SITRI assumes no liability for patent infringement arising from the use of the information contained in this report.

To Know





EM30713 Product Analysis Report

Table Of Contents

Market Analysis

Epticore Introduction & ALS/PS Market	Page 2
Epticore Products & Market	Page 3
ALS+PS Sensors Comparison	Page 4

Product Analysis

Package Overview	Page 6
Die Information.....	Page 9
General Structure	Page 13
Photodiode Plan View.....	Page 34
Photodiode Cross Section.....	Page 42
Photodiode Structure Diagram	Page 66
LPNP Transistor	Page 87
Major Findings	Page 89

www.sitrigroup.com

Weibo



Wechat

