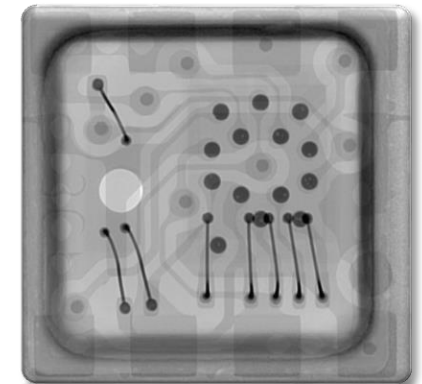
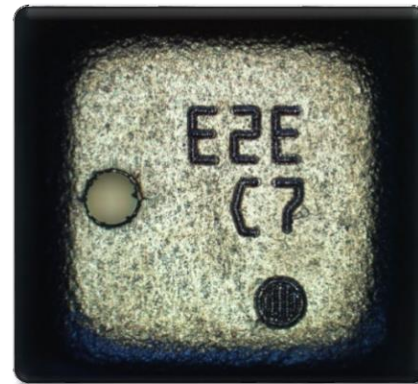
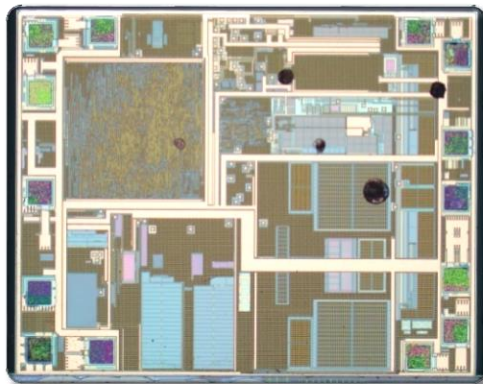


BME280

Integrated Environmental Unit



Product Analysis Report

This report is protected by copyright and may not be by way of trade or otherwise, be copied, reproduced, re-sold, lent, hired out in any form without express written permission from Shanghai Industrial μ Technology Research Institute (Hereinafter referred to as SITRI). SITRI always endeavors to provide accurate and reliable information to its customers. However, it is not possible to guarantee absolute accuracy of all information contained herein and SITRI can assume no liability for inadvertent errors in this report.

This report was prepared for our Clients' private study, analysis or research and for no other purpose. The information contained in this report may describe technical innovations, which are the subject of patents held by third parties. The disclosure by SITRI of any such information is in no form whatsoever an inducement to infringe any patent. SITRI assumes no liability for patent infringement arising from the use of the information contained in this report.



- Device Summary.....3
 - Device Summary
 - BME280 Introduction
- Package Analysis5
 - Package Overview
 - Package X-Ray
 - Package Cross Section
- ASIC Die Information.....25
 - Die Photo with Measurement
 - Die Mark and Die Corner Image
 - Pad Size
- ASIC Die General Structure.....29
 - Die Thickness
 - Each Layer Structure and Thickness Measurement
 - Gate Length of Poly Gate
- Pressure Sensor Die Information.....34
 - Die Thickness
 - Each Layer Structure and Thickness Measurement
 - Gate Length of Poly Gate

- Pressure Sensor Piezoresistor Information.....38
 - Plan View OM Image with Measurement
 - Cross Section OM Image
 - Cross Section SEM Image with Cavity and Piezoresistor Measurement
- Resistive Humidity Sensor Die Information55
 - Die Photo with Measurement
 - Die Corner Image
 - Pad Size
- Resistive Humidity Sensor Information58
 - Plan View OM Image with Diemension and Each Layer Description
 - EDS Analysis for Each Layer
 - Cross Section SEM Image with Each Layer Measurement and Description
- Major Findings72
 - Pressure Sensor Piezoresistor Structure Diagram
 - Resistive Humidity Sensor Process Flow
 - Resistive Humidity Sensor Functionality Explanation
 - Points