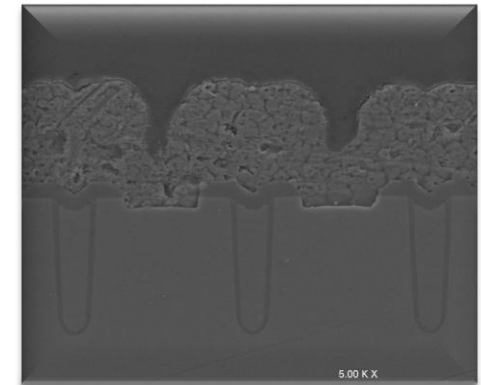
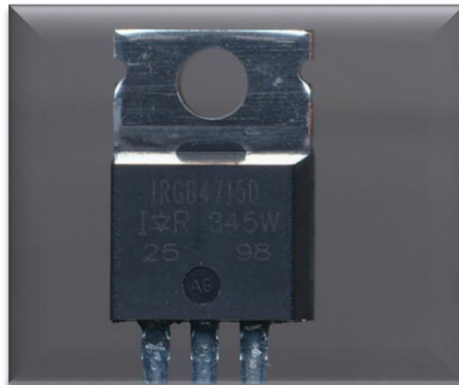


IRGB4715D

Insulated Gate Bipolar Transistor



Product Analysis Report

This report is protected by copyright and may not be by way of trade or otherwise, be copied, reproduced, re-sold, lent, hired out in any form without express written permission from Shanghai Industrial μ Technology Research Institute (Hereinafter referred to as SITRI). SITRI always endeavors to provide accurate and reliable information to its customers. However, it is not possible to guarantee absolute accuracy of all information contained herein and SITRI can assume no liability for inadvertent errors in this report.

This report was prepared for our Clients' private study, analysis or research and for no other purpose. The information contained in this report may describe technical innovations, which are the subject of patents held by third parties. The disclosure by SITRI of any such information is in no form whatsoever an inducement to infringe any patent. SITRI assumes no liability for patent infringement arising from the use of the information contained in this report.

To Know



[Table1 IRGB4715D Device Summary](#)

[Figure1.1.1 IRGB4715D Package OM Photo](#)

[Figure1.2.1 IRGB4715D Package X-Ray Photo](#)

[Figure2.1.1 IRGB4715D IGBT Die OM Photo with Dimensions](#)

[Figure2.1.2 IRGB4715D IGBT Die Corner](#)

[Figure2.1.3 IRGB4715D IGBT Die Pad with Dimensions](#)

[Figure2.2.1 IRGB4715D Diode Die Photo](#)

[Figure2.2.2 IRGB4715D Diode Die Corner](#)

[Figure3.1.1 SEM Cross Section Image-Die Edge](#)

[Figure3.1.2 SEM Cross Section Image with Dimensions-Passivation](#)

[Figure3.1.3 SEM Cross Section Image with Dimensions-Die Thickness](#)

[Figure3.1.4 SEM Cross Section Image with Dimensions-Trench](#)

[Figure3.1.5 SEM Cross Section Image with Dimensions-Metal Al](#)

[Figure3.1.6 SEM Cross Section Image with Dimensions-Contact](#)

[Figure3.1.7 SEM Cross Section Image with Vertical Dimensions](#)

[Figure3.1.8 SEM Cross Section Image with Dimensions-Top Trench](#)

[Figure3.1.9 SEM Cross Section Image with Dimensions-Middle Trench](#)

[Figure3.1.10 SEM Cross Section Image with Dimensions-Bottom Trench](#)

[Figure4.1.1 OM Cross Section Image with Body Description-After Stained](#)

[Figure4.2.1 SEM Cross Section Image with Body Dimension1-After Stained](#)

[Figure4.2.2 SEM Cross Section Image with Body Dimension2-After Stained](#)

[Figure4.2.3 SEM Cross Section Image with Plus Dimension-After Stained](#)

[Figure5.1.1 EDS Analysis of Metal-Al](#)

[Figure5.1.2 EDS Analysis of ILD2](#)

[Figure5.1.3 EDS Analysis of Gate Oxide](#)

[Figure5.1.4 EDS Analysis of Trench Poly](#)

[Figure5.1.5 EDS Analysis of ILD1](#)

[Figure5.1.6 EDS Analysis of Passivation](#)

[Figure5.1.7 Backside Metal EDS Analysis of Each Layer](#)

[Figure6.1.1 Die Edge Guard Ring OM Image with Descriptions-After Stained](#)

[Figure6.2.1 Die Edge Guard Ring SEM Image with Dimensions-After Stained](#)

[Figure6.2.2 Die Edge Guard Ring SEM Image After Stained with Dimensions-Area 1 and 2](#)

[Figure6.2.3 Die Edge Guard Ring SEM Image After Stained with Dimensions-Area 2 and 3](#)

[Figure6.2.4 Die Edge Guard Ring SEM Image After Stained with Dimensions1-Area 2](#)

[Figure6.2.5 Die Edge Guard Ring SEM Image After Stained with Dimensions2-Area 2](#)

[Figure6.2.6 Die Edge Guard Ring SEM Image After Stained with Dimensions3-Area 2](#)

[Figure6.2.7 Die Edge Guard Ring SEM Image After Stained with Dimensions1-Area 3](#)

[Figure6.2.8 Die Edge Guard Ring SEM Image After Stained with Dimensions2-Area 3](#)

[Figure6.2.9 Die Edge Guard Ring SEM Image After Stained with Dimensions1-Area 3 and 4](#)

[Figure6.2.10 Die Edge Guard Ring SEM Image After Stained with Dimensions2-Area 3 and 4](#)

[Figure6.2.11 Die Edge Guard Ring SEM Image After Stained with Dimensions1-Area 4](#)

[Figure6.2.12 Die Edge Guard Ring SEM Image After Stained with Dimensions2-Area 4](#)

[Figure6.2.13 Die Edge Guard Ring SEM Image After Stained with Dimensions-Area 4 and 5](#)

[Figure6.2.14 Die Edge Guard Ring SEM Image After Stained with Dimensions-Area 5](#)

[Major Findings](#)