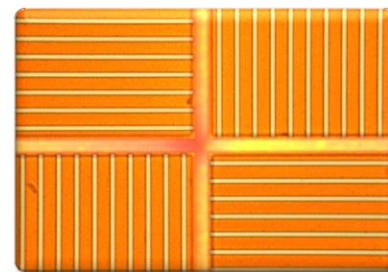
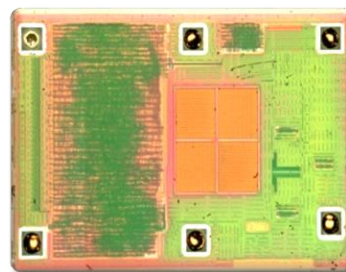


# TMD2771

## Digital ALS and Proximity Module



# Product Analysis Report

This report is protected by copyright and may not be by way of trade or otherwise, be copied, reproduced, re-sold, lent, hired out in any form without express written permission from Shanghai Industrial  $\mu$ Technology Research Institute (Hereinafter referred to as SITRI). SITRI always endeavors to provide accurate and reliable information to its customers. However, it is not possible to guarantee absolute accuracy of all information contained herein and SITRI can assume no liability for inadvertent errors in this report.

This report was prepared for our Clients' private study, analysis or research and for no other purpose. The information contained in this report may describe technical innovations, which are the subject of patents held by third parties. The disclosure by SITRI of any such information is in no form whatsoever an inducement to infringe any patent. SITRI assumes no liability for patent infringement arising from the use of the information contained in this report.

To Know





# TMD2771 Product Analysis Report

## Table Of Contents

### Market Analysis

- ams Introduction and ALS/PS Market ..... Page 2
- ams Products & Services ..... Page 3
- ALS+PS Sensor Comparison .....Page 4
- TMD Market Distribution ..... Page 5

### Product Analysis

- Package Overview ..... Page7
- Die Information.....Page 11
- General Structure .....Page 15
- Photodiode Top Right..... Page 26
- Photodiode Top Left.....Page37
- Photodiode Bottom Left .....Page 48
- Photodiode Bottom Right .....Page59
- Major Findings .....Page 70

www.sitrigroup.com

Weibo



Wechat

