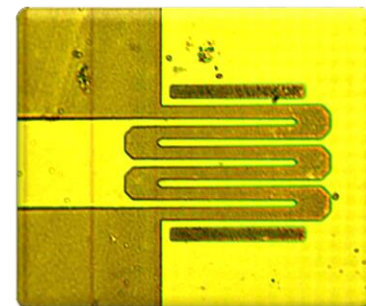
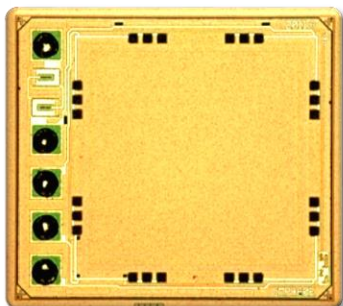


# BMP280

## Digital, Barometric Pressure Sensor



# Product Analysis Report

This report is protected by copyright and may not be by way of trade or otherwise, be copied, reproduced, re-sold, lent, hired out in any form without express written permission from Shanghai Industrial  $\mu$ Technology Research Institute (Hereinafter referred to as SITRI). SITRI always endeavors to provide accurate and reliable information to its customers. However, it is not possible to guarantee absolute accuracy of all information contained herein and SITRI can assume no liability for inadvertent errors in this report.

This report was prepared for our Clients' private study, analysis or research and for no other purpose. The information contained in this report may describe technical innovations, which are the subject of patents held by third parties. The disclosure by SITRI of any such information is in no form whatsoever an inducement to infringe any patent. SITRI assumes no liability for patent infringement arising from the use of the information contained in this report.

To Know



# BMP280 Product Analysis Report

## Table Of Contents

### Market Analysis

Bosch Introduction & MEMS Revenue .....	Page 2
MEMS Market Analysis .....	Page 3
Bosch MEMS & Pressure Revenue Analysis .....	Page 4
Barometer Comparison .....	Page 5

### Product Analysis

Package Overview .....	Page 7
ASIC Die Information .....	Page 10
ASIC Die General Structure .....	Page 14
MEMS Die Information .....	Page 19
Piezoresistor Plan View .....	Page 23
Piezoresistor Cross Section .....	Page 28
Piezoresistor Structure Diagram.....	Page 41
Major Findings .....	Page 42

www.sitrigroup.com

Weibo



Wechat

