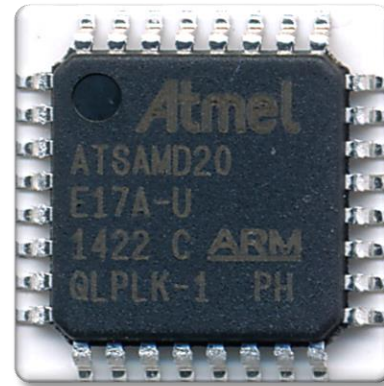
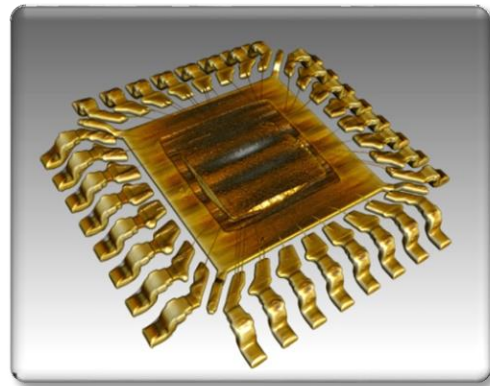


ATSAMD20

ARM-Based Microcontroller



Product Analysis Report

This report is protected by copyright and may not be by way of trade or otherwise, be copied, reproduced, re-sold, lent, hired out in any form without express written permission from Shanghai Industrial μ Technology Research Institute (Hereinafter referred to as SITRI). SITRI always endeavors to provide accurate and reliable information to its customers. However, it is not possible to guarantee absolute accuracy of all information contained herein and SITRI can assume no liability for inadvertent errors in this report.

This report was prepared for our Clients' private study, analysis or research and for no other purpose. The information contained in this report may describe technical innovations, which are the subject of patents held by third parties. The disclosure by SITRI of any such information is in no form whatsoever an inducement to infringe any patent. SITRI assumes no liability for patent infringement arising from the use of the information contained in this report.

To Know



ATSAMD20

Product Analysis Report

Table Of Contents

Device Summary.....	Page 2
Package Overview.....	Page 3
X-ray	Page 4
Die Photo	Page 5
Die Mark	Page 6
Die Corner	Page 7
Pad Size	Page 8
General Structure	Page 9
Major Findings.....	Page 14

www.sitrigroup.com

Weibo



Wechat

