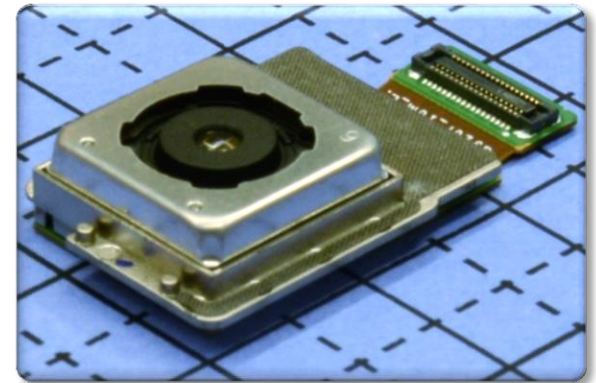
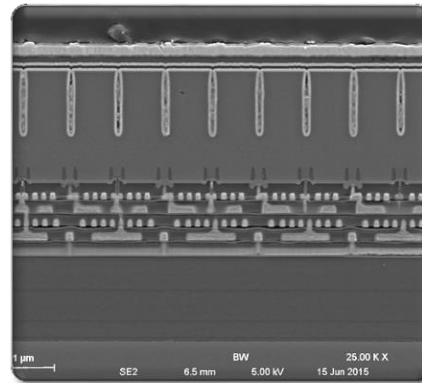
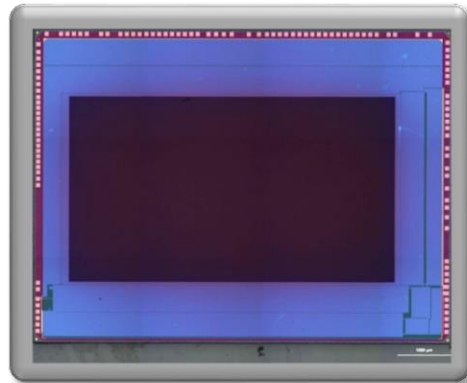




# Image Sensor

## Image Sensor in Samsung Galaxy S6



# Product Analysis Report

This report is protected by copyright and may not be by way of trade or otherwise, be copied, reproduced, re-sold, lent, hired out in any form without express written permission from Shanghai Industrial  $\mu$ Technology Research Institute (Hereinafter referred to as SITRI). SITRI always endeavors to provide accurate and reliable information to its customers. However, it is not possible to guarantee absolute accuracy of all information contained herein and SITRI can assume no liability for inadvertent errors in this report.

This report was prepared for our Clients' private study, analysis or research and for no other purpose. The information contained in this report may describe technical innovations, which are the subject of patents held by third parties. The disclosure by SITRI of any such information is in no form whatsoever an inducement to infringe any patent. SITRI assumes no liability for patent infringement arising from the use of the information contained in this report.



Module Overview.....3

Module Overview

Device Summary.....4

Device Summary

Patent Interpretation

Image Sensor Die Photo.....5

Die Photo with Dimension

Image Sensor Die Mark.....6

Die Mark

Image Sensor Die Corner.....7

Die Corner

Image Sensor Pad Size.....8

Pad Size with Measurement

Image Sensor Cross Section.....9

Die Thickness with Dimension

General Structure with Dimension

Gate Length with Dimension

Major Findings .....14

Points