

# MPU9250

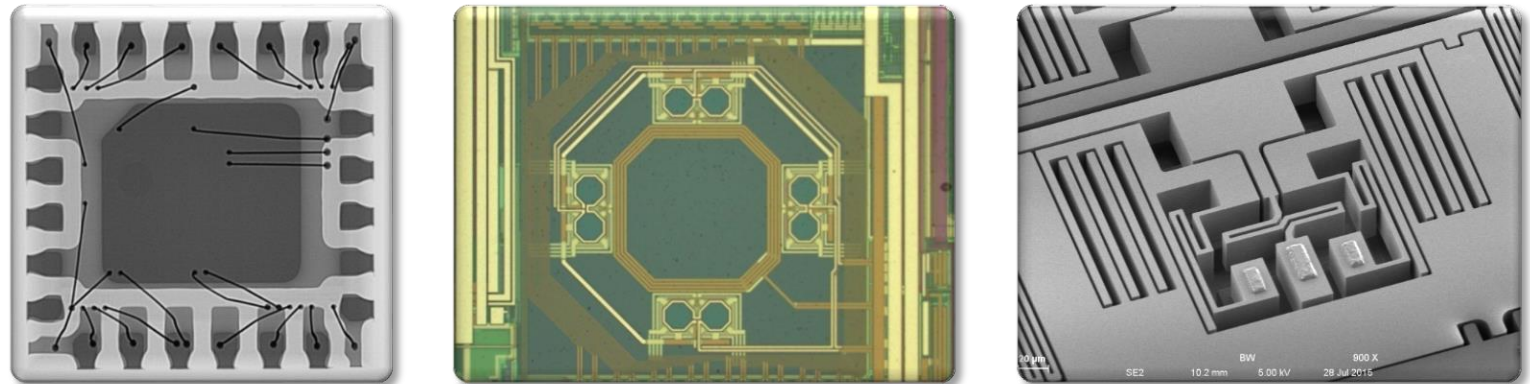
## 9-axis Motion Tracking Device

www.sitrigroup.com

Weibo



Wechat



# Product Analysis Report

This report is protected by copyright and may not be by way of trade or otherwise, be copied, reproduced, re-sold, lent, hired out in any form without express written permission from Shanghai Industrial  $\mu$ Technology Research Institute (Hereinafter referred to as SITRI). SITRI always endeavors to provide accurate and reliable information to its customers. However, it is not possible to guarantee absolute accuracy of all information contained herein and SITRI can assume no liability for inadvertent errors in this report.

This report was prepared for our Clients' private study, analysis or research and for no other purpose. The information contained in this report may describe technical innovations, which are the subject of patents held by third parties. The disclosure by SITRI of any such information is in no form whatsoever an inducement to infringe any patent. SITRI assumes no liability for patent infringement arising from the use of the information contained in this report.

To Know



- Device Summary.....3
  - Device Summary
  - MPU9250 Introduction
- Package Analysis .....5
  - Package Overview
  - Package X-Ray
  - Package SEM Cross Section with Dimensions
- Die Information.....14
  - ASIC Die Information
  - MEMS Die Information
  - Magnetometer Die Information
- Accelerometer MEMS Die Analysis.....35
  - OM Plan View Image with Descriptions
  - SEM Plan View and Angle View Image with Descriptions and Dimensions
  - SEM Cross Section Image with Descriptions and Dimensions

- Gyroscope MEMS Die Analysis.....64
  - OM Plan View Image with Descriptions
  - SEM Plan View and Angle View Image with Descriptions and Dimensions
  - SEM Cross Section Image with Descriptions and Dimensions
- Magnetometer Sensor Die Analysis.....83
  - Plan View OM Image with Descriptions
  - Cross Section SEM Image with Descriptions and Dimensions
  - EDS Analysis for Disk above Magnetometer Sensor Die
- Magnetometer Hall Sensor Stained Analysis.....93
  - OM Plan View Image after Stained with Descriptions and Dimensions
  - SEM Cross Section Image after Stained with Descriptions and Dimensions
- Major Findings .....102
  - Hall Sensor Working Principle and Calculation Formular
  - Ineria Process Flow
  - Major Finding Points