

C0068

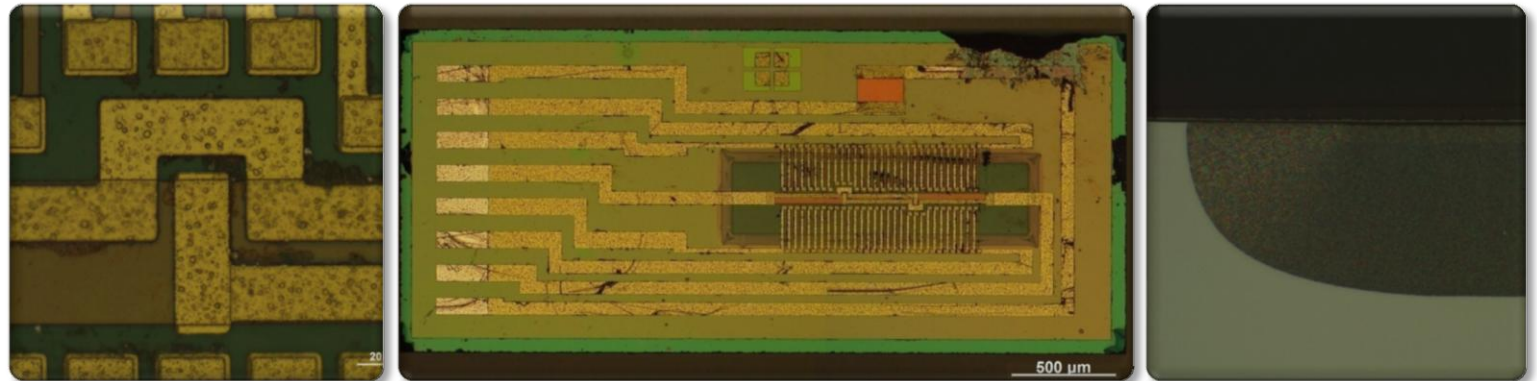
Flow Sensor Product Analysis Report

www.sitrigroup.com

Weibo



Wechat



Product Analysis Report

This report is protected by copyright and may not be by way of trade or otherwise, be copied, reproduced, re-sold, lent, hired out in any form without express written permission from Shanghai Industrial μ Technology Research Institute (Hereinafter referred to as SITRI). SITRI always endeavors to provide accurate and reliable information to its customers. However, it is not possible to guarantee absolute accuracy of all information contained herein and SITRI can assume no liability for inadvertent errors in this report.

This report was prepared for our Clients' private study, analysis or research and for no other purpose. The information contained in this report may describe technical innovations, which are the subject of patents held by third parties. The disclosure by SITRI of any such information is in no form whatsoever an inducement to infringe any patent. SITRI assumes no liability for patent infringement arising from the use of the information contained in this report.

To Know



- Device Summary.....3
 - Device Summary
- Flow Sensor Die Information.....4
 - Die Photo
 - Die Corner
 - Die Pad Size
- Flow Sensor Die Thickness.....7
 - Die Thickness
- Flow Sensor Plan View Analysis.....8
 - Die OM Plan View with Dimensions of Flow Sencor
 - Die SEM Plan View with Dimensions of Flow Sensor

- Flow Sensor Cross Section 1 Analysis.....19
 - Cross Section 1 OM Image with Dimensions
 - Cross Section 1 SEM Image with Dimensions
- Flow Sensor Cross Section 2 Analysis.....46
 - Cross Section 2 OM Image with Dimensions
 - Cross Section 2 SEM Image with Dimensions
- Flow Sensor EDS Analysis.....69
 - EDS Analysis of Each Layer
- Major Findings.....85
 - Points